

Swissline

Miniaturaußenbearbeitung,
zweischneidig

miniature external machining,
two-cutting edges

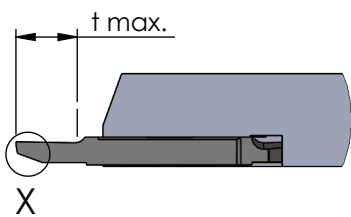
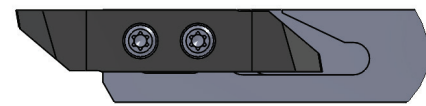
Typ ZW50

Wendeschneidplatten,
Hintendreher, Wipergeometrie

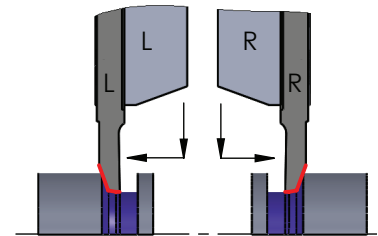
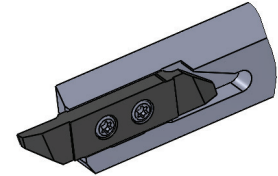
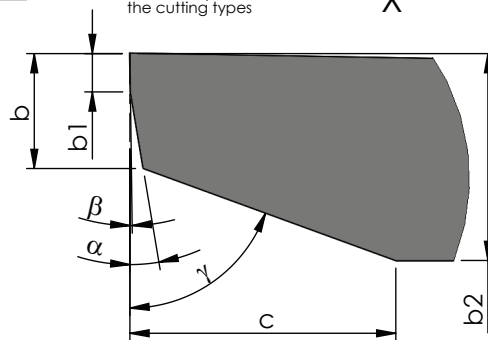
indexable inserts,
back turning, wiper geometry

Stechtiefe t max. = 6 - 8 mm
Stechbreite b = 0.8 - 1.8 mm

depth of groove t max. = 6 - 8 mm
width of groove b = 0.8 - 1.8 mm



Wipergeometrie
siehe: Beschreibung
Schneidenausführung
wiper geometry
see: description of
the cutting types



Rechts (R): wie gezeichnet
Links (L): spiegelbildlich

Rechte Schneidpl. in rechtem Halter
Linke Schneidpl. in linkem Halter

Abmessungen in mm

righthand version (R): as shown
lefthand version (L): mirror image

use RH insert in RH tool holder and
LH insert in LH tool holder

dimensions in mm

Bestellnummer part number	b	t max.	α	b1	b2	β	γ	c	K10F	CN45F	AL41F	P18C	Klemmhalter Typ	toolholder type
R/L ZW50.08060800	0.8	6	8°	0.5	2	1°	70°	3	●			●		
R/L ZW50.10060800	1.0	6	8°	0.5	2.2	1°	70°	3	●			●	R/L HW10.XXX	
R/L ZW50.12080800	1.2	8	8°	0.5	2.4	1°	70°	3	●			●	R/L HW15.XXX	
R/L ZW50.15080800	1.5	8	8°	0.5	2.7	1°	70°	3	●			●	R/L HW20.XXX	
R/L ZW50.18080800	1.8	8	8°	0.5	3.0	1°	70°	3	●			●		

Weitere HM Sorten können Sie in der Sorten-
übersicht im Kapitel "Technische Hinweise" und
der Preisliste finden.

Bestellbeispiel:
für rechte Ausführung und Sorte
RZW50.08060800/P18C

More carbide grades you can find in the grades
summary in the chapter "technical instructions"
and in the price list.

order-example:
righthand version and grade
RZW50.08060800/P18C